

JIB CRANES

Abell-Howe Floor Mounted Jib Crane

Specifications

Features

Model J-900

Model J-906FTC

Conco Electrified Articulated Jib Crane

Standard Duty

Heavy Duty

Light Duty



JIB CRANES

Amick Associates, Inc.

Abell-Howe Floor Mounted Jib Crane

version #2-04



Made in the U.S.A.

Abell-Howe Floor Mounted Jib Crane

Specifications

MAST: Fabricated from heavy wall structural steel pipe with wall thickness sized to minimize deflection.

BASE PLATE: Large diameter base plate is reinforced with heavy steel gussets for continuous alignment and rigidity.

HEAD SECTION: Rigid steel plate box type with welded construction for minimum deflection between boom and mast.

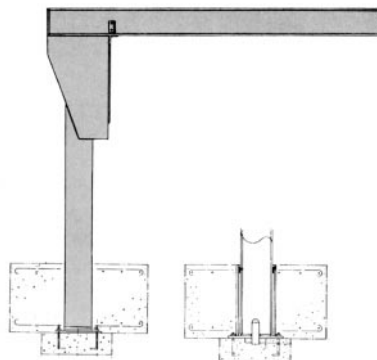
- Bottom roller assembly can be shimmed for boom leveling.

BOOM: Rolled steel I-beam section with long wearing tapered flange for smooth trolley travel.

- End stops at both ends of the boom are provided to limit trolley travel.

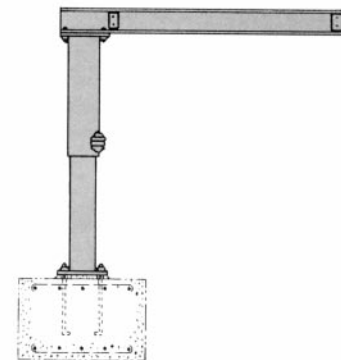
Features

- The J-904 boom features full 360° rotation on a tapered roller bearing providing full capacity vertical and radial thrust loading.
- The lower section of the head revolves around the pillar on a pair of steel rollers equipped with self-aligning roller bearings.
- Available in hand push, hand geared rotation, air or electric motor drives.
- J-904 Pillar Jib Cranes are available as standard in capacities from 500 to 20,000 lbs., spans to 30 feet and under boom height from 8 to 30 ft.
- Larger capacity and special configurations are available upon request.



Model J-904F Foundation Pillar Jib Crane

Features 360° rotation.
Mast is mounted in concrete foundation.
Removable sleeve is also available.



**Light-Duty
Model J-904S Foundation-Mount
Pillar Jib Crane
1/2 Ton Maximum Capacity**

*Warning – To avoid injury:

- Do not exceed working load limit, load rating, or capacity.
- Do not use to lift people or loads over people.
- Use only alloy chain for overhead lifting.
- Read and follow all instructions.

* WARNING

Overloading and improper use can result in injury. See above.

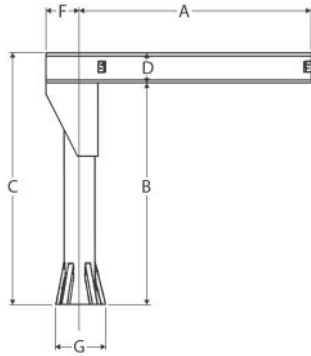
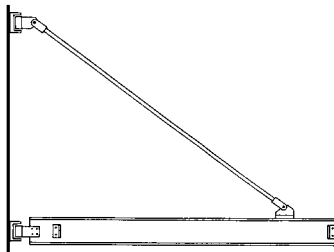


Table 11-1. Sample of J-904 Sizes and Capacities

Capacity (tons)	Span A	Boom Height B	Overall Height C	Model Number J904	Mast Diameter (in.)	Boom Size D	Base Plate Diameter G	Base Plate Diameter F	Approx. Net Weight (lbs.)
1/2	10'0"	10'0"	10'6"	120-06B	12-3/4	6'/12.5#	3'0"	1'3"	1,040
	12'0"	10'0"	10'7"	120-07B	12-3/4	7'/15.3#	3'0"	1'3"	1,265
	14'0"	10'0"	10'8"	120-08B	12-3/4	8'/18.4#	3'0"	1'3"	1,350
	16'0"	10'0"	10'10"	120-10B	12-3/4	10'/25.4#	3'0"	1'3"	1,515
	18'0"	10'0"	10'10"	120-10B	12-3/4	10'/25.4#	3'0"	1'3"	1,565
	20'0"	10'0"	11'0"	140-12B	14	12'/31.8#	3'6"	1'5"	2,055
1	10'0"	10'0"	10'8"	120-08B	12-3/4	8'/18.4#	3'0"	1'3"	1,280
	12'0"	10'0"	10'10"	120-10B	12-3/4	10'/25.4#	3'0"	1'3"	1,415
	14'0"	10'0"	11'0"	140-12B	14	12'/31.8#	3'6"	1'5"	1,855
	16'0"	10'0"	11'0"	140-12B	14	12'/31.8#	3'6"	1'5"	1,920
	18'0"	10'0"	11'3"	140-15B	14	15'/42.9#	3'6"	1'5"	2,205
	20'0"	10'0"	11'3"	140-15B	14	15'/42.9#	3'6"	1'5"	2,290
2	10'0"	12'0"	13'0"	140-12B	14	12'/31.8#	3'6"	1'5"	1,825
	12'0"	12'0"	13'0"	160-12B	16	12'/31.8#	4'0"	14-3/8"	2,440
	14'0"	12'0"	13'3"	160-15B	16	15'/42.9#	4'0"	14-3/8"	2,690
	16'0"	12'0"	13'6"	160-18B	16	18'/54.7#	4'0"	14-3/8"	2,990
	18'0"	12'0"	13'6"	180-18B	18	18'/54.7#	4'6"	1'5-3/8"	3,455
	20'0"	12'0"	13'6"	180-18B	18	18'/54.7#	4'6"	1'5-3/8"	3,585
3	10'0"	12'0"	13'3"	160-15B	16	15'/42.9#	4'0"	1'4-3/8"	2,515
	12'0"	12'0"	13'3"	180-15B	18	15'/42.9#	4'6"	1'5-3/8"	2,955
	14'0"	12'0"	13'6"	180-18B	18	18'/54.7#	4'6"	1'5-3/8"	3,235
	16'0"	12'0"	13'6"	200-18B	20	18'/54.7#	5'0"	1'8-3/8"	3,900
	18'0"	12'0"	13'8"	200-20B	20	20'/65.4#	5'0"	1'4-3/8"	4,240
	20'0"	12'0"	14'0"	240-24B	24	24'/79.9#	5'6"	1'11-1/8"	5,320
5	10'0"	12'0"	13'6"	200-18B	20	18'/54.7#	5'0"	1'8-3/8"	3,570
	12'0"	12'0"	13'6"	240-18B	24	18'/54.7#	5'6"	1'11-1/8"	4,230
	14'0"	12'0"	13'8"	240-20B	24	20'/65.4#	5'6"	1'11-1/8"	4,520
	16'0"	12'0"	14'0"	240-24B	24	24'/79.9#	5'6"	1'11-1/8"	4,960
	18'0"	12'0"	14'0"	300-24HB	30	24'/105.9#	6'0"	2'2"	7,180
	20'0"	12'0"	14'0"	300-24HB	30	24'/105.9#	6'0"	2'2"	7,390

Model J-900

Thru 5 ton Standard capacity 200° maximum rotation.ⓐ

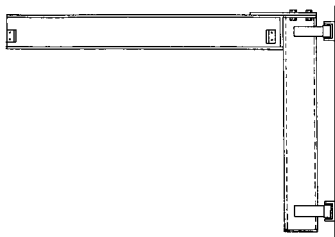


Specifications

- Fabricated, steel wall bracket fittings with bearings.
- Threaded tie rods provide take-up for boom leveling.

Model J-906FCT

Thru 5 ton capacity, 20' spans standard for high hook lift application.ⓐ



Specifications

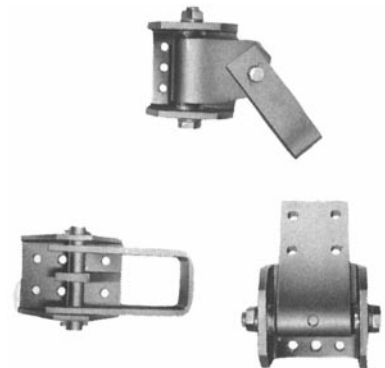
- Conservably designed mast resists torsional forces from off-center loading.
- Fabricated steel hinge fittings with bearings.
- Boom is preset to compensate for deflection under load.

ⓐ Larger capacity and special configurations available.

Note: Kits are available to convert to wall mount.

Available in Motorized Versions — Consult Factory

- **Abell-Howe Wall Bracket Jib Crane Fitting**
Make your own J-900 Jib Crane using the same quality hinge fitting used on all Abell-Howe J-900 Jibs. Kit includes Upper Tie Rod Hinges; Lower Boom Hinge; and Boom End Tie Rod Connector. For capacities of 1 to 5 tons. Complete instructions included. You provide I-beam, tie rods and assembly.
- **Abell-Howe Full Cantilever Jib Crane Fitting**
Make your own J906FCT Jib Crane up to 2 ton capacity.



***WARNING** Overloading and improper use can result in injury. See above.

JIB CRANES

Amick Associates, Inc.

Conco Electrified Articulated Jib Crane

version #2-04



Made in the U.S.A. 

Conco Electrified Articulated Jib Crane

Offers operators the lateral maneuverability of an articulated jib arm with the added flexibility provided by a prewired electric supply. This new jib arm features:

- Two 360° pivot arms that can reach and operate in confined areas where standard jib cranes cannot.
- Ease of movement and accurate positioning assured with heavy roller bearings in both arms.
- Unique electrification includes installed conductor wire and electric plugs which allow operator to easily add electric hoists such as the Lodestar hoist (hoist not included).
- Versatile as a floor or overhead mounted unit.
- More options for efficient, ergonomic operation in tight spaces or where headroom limitations rule out use of conventional straight armed jibs.
- Capacities to one ton and work envelopes to 32 feet in diameter.
- One-year warranty.
- Made in U.S.A.

***Warning – To avoid injury:**

- Do not exceed working load limit, load rating, or capacity.
- Do not use to lift people or loads over people.
- Use only alloy chain for overhead lifting.
- Read and follow all instructions.





Table 11-2. Standard Duty Electrified Articulated Jib Crane Specifications

Model Number	Capacity ^① (lbs.)	Reach (ft.)	A (in.)	B (in.)	C (in.)	D (in.)	E (in.)	F (in.)
EAJ1250-8P	1,250	8	56	40	6-1/4	124-1/2	98	31-5/8
EAJ1110-9P	1,110	9	63	45	6-1/4	124-1/2	98	31-5/8
EAJ1000-10P	1,000	10	70	50	6-1/4	124-1/2	98	31-5/8
EAJ910-11P	910	11	77	55	6-1/4	124-1/2	98	31-5/8
EAJ835-12P	835	12	84	60	6-1/4	124-1/2	98	31-5/8
EAJ770-13P	770	13	91	65	6-1/4	124-1/2	98	31-5/8
EAJ715-14P	715	14	98	70	6-1/4	124-1/2	98	31-5/8
EAJ665-15P	665	15	105	75	6-1/4	124-1/2	98	31-5/8

Note: To convert to ceiling mount, change suffix on model to C.

^① Include hoist weight to determine capacity.

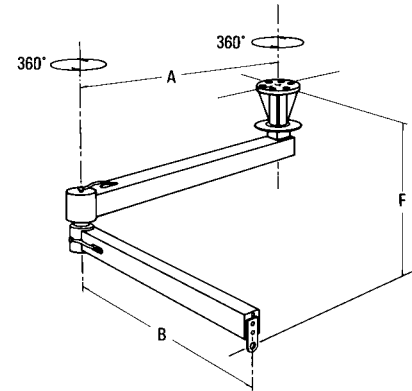


Table 11-3. Heavy Duty Electrified Articulated Jib Crane Specifications

Model Number	Capacity ^① (lbs.)	Reach (ft.)	A (in.)	B (in.)	C (in.)	D (in.)	E (in.)	F (in.)
EAJ2000-8P	2,000	8	56	40	11-3/4	134-1/2	98	44-1/2
EAJ1785-9P	1,785	9	63	45	11-3/4	134-1/2	98	44-1/2
EAJ1600-10P	1,600	10	70	50	11-3/4	134-1/2	98	44-1/2
EAJ1460-11P	1,460	11	77	55	11-3/4	134-1/2	98	44-1/2
EAJ1340-12P	1,340	12	84	60	11-3/4	134-1/2	98	44-1/2
EAJ1256-13P	1,256	13	91	65	11-3/4	134-1/2	98	44-1/2
EAJ1150-14P	1,150	14	98	70	11-3/4	134-1/2	98	44-1/2
EAJ1071-15P	1,071	15	105	75	11-3/4	134-1/2	98	44-1/2
EAJ1000-16P	1,000	16	112	80	11-3/4	134-1/2	98	44-1/2

Note: To convert to ceiling mount, change suffix on model to C.

^① Include hoist weight to determine capacity.

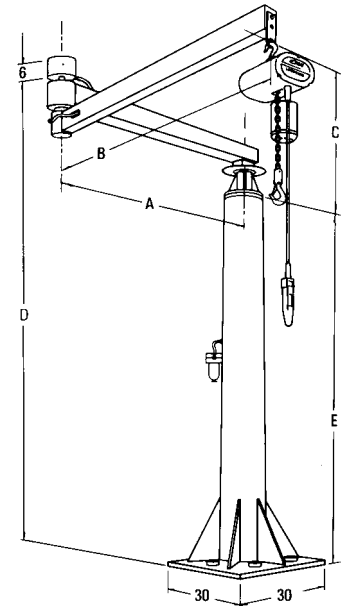


Table 11-4. Light Duty Electrified Articulated Jib Crane Specifications

Model Number	Capacity ^① (lbs.)	Reach (ft.)	A (in.)	B (in.)	C (in.)	D (in.)	E (in.)	F (in.)
EAJ310-8P	310	8	56	40	3-7/8	106-1/4	90	18-1/8
EAJ280-9P	280	9	63	45	3-7/8	106-1/4	90	18-1/8
EAJ250-10P	250	10	70	50	3-7/8	106-1/4	90	18-1/8
EAJ230-11P	230	11	77	55	3-7/8	106-1/4	90	18-1/8
EAJ210-12P	210	12	84	60	3-7/8	106-1/4	90	18-1/8
EAJ190-13P	190	13	91	65	3-7/8	106-1/4	90	18-1/8
EAJ180-14P	180	14	98	70	3-7/8	106-1/4	90	18-1/8
EAJ170-15P	170	15	105	75	3-7/8	106-1/4	90	18-1/8

Note: To convert to ceiling mount, change suffix on model to C.

^① Include hoist weight to determine capacity.

***Warning – To avoid injury:**

- Do not exceed working load limit, load rating, or capacity.
- Do not use to lift people or loads over people.
- Use only alloy chain for overhead lifting.
- Read and follow all instructions.

***WARNING** Overloading and improper use can result in injury. See above.

This Page Intentionally Left Blank