

LODRAIL

Overhead Rail — Steel

Specifications

General Description

Photo Description

Overhead Rail — Extruded Aluminum

General Description



LODERAIL

Amick Associates, Inc.

Overhead Rail – Steel

version #2-04



Made in the U.S.A. 

Overhead Rail – Steel

Specifications

- Capacity: up to 4,000 lbs.
- Width: to 34 feet.
- Length: as required.
- Height: to 17 feet.

General Description

It's Revolutionary

- Pre-engineered yet versatile.
- Self-supporting yet rigid.
- Seismic designed.
- Ergonomic benefits.
- High productivity.
- Modular.
- Relocatable.
- High resale value.

It's LodeRail

A manually operated floor-supported work area crane available with manual, electric, or air powered hoisting unit configured for your work area.

■ Earthquake Resistant

LodeRail meets all the stringent requirements of the Uniform Building Code, Seismic Zone 4 which covers the most severe earthquake prone areas in the United States. Your LodeRail is designed to take whatever your application requires or nature imposes.

■ Entirely Self-Supporting

While others provide similar products, the LodeRail is the only true self-supporting crane system of its kind in the market today. You don't need any X-bracing, building tie backs or kickers for any configuration.

■ Ergonomically Justified

OSHA will soon introduce a new set of National Ergonomic Standards. Reduce injuries while increasing productivity with less effort. You can manually move your load on LodeRail with a 100:1 productivity ratio, e.g., an operator can start a 500 pound load moving with 5 pounds of force. Over 100 billion dollars is paid annually by USA employers in direct and indirect workers' compensation claims.

Lower costs for workers' compensation and higher productivity translates into increased profits.

LodeRail: Economical, Efficient

■ Increased Floor Space

Complete hook coverage under the crane reduces the need for vehicle traffic, increasing valuable floor space for production.

■ Lower Labor Costs

One person with a crane can precisely position and assemble parts more efficiently and safely than three men using a forklift.

LodeRail: A Simple Solution

■ Easy to Install

Installation can usually be done with your own crew. Frames bolt directly to most floors.

■ Easy to Order

Our pre-engineered standard components make ordering easy and deliveries fast.

■ Easy to Extend or Relocate

Unique all bolted construction and modular design makes it easy to add sections or to disassemble and relocate.

A Complete System

Your LodeRail crane is a complete system. You get the runway structure, runway rails, festoon electrification for the bridge and runway, the bridge, trolleys and even the bolts for the floor. Color is yellow for the bridges, runways and frames. Custom colors are available on special order.

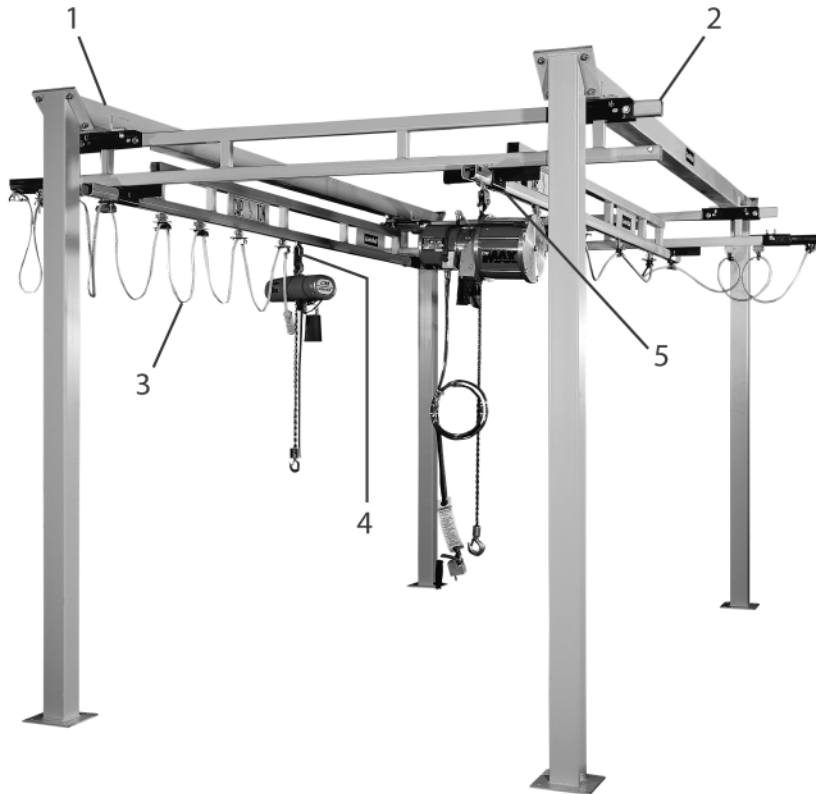
Also Available

Ceiling mounted systems and powered cranes for special applications.





Photo Description



3. Festoon Electrification

Festoon 4-wheel trolleys are standard for supporting flat cable or air hose along the length of runway and bridge. Air hose trolleys have swivel type support saddles.



4. Smooth Rolling Trolleys

The hoist trolleys, with load bar, provide the means for suspending the hoist. Wheels are tapered to match the taper of the track, reducing rolling resistance. Wheel bearings are sealed and lubricated for life. Trolleys are designed to operate in temperatures from +5°F to 200°F.



5. Free Moving End Trucks

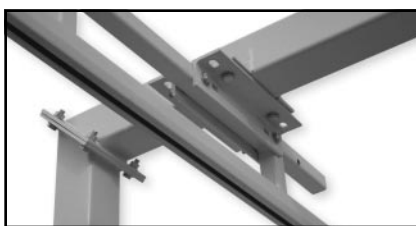
Our bridge girder floats free in one end truck and the other is firmly clamped, allowing for any slight misalignment of the runway tracks. The trucks also have two horizontal wheels that center the truck within the track to prevent binding of the bridge. Wheels are tapered to match the taper of the track which reduces rolling resistance. Wheel bearings are sealed and lubricated for life.

*Warning – To avoid injury:

- Do not exceed working load limit, load rating, or capacity.
- Do not use to lift people or loads over people.
- Read and follow all instructions.

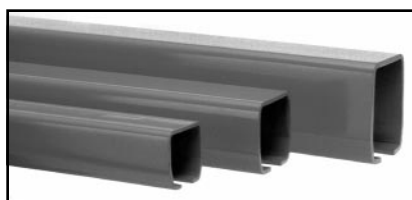
A.N.S.I. Compliance

LodeRail complies with the American National Standard ASME B30.11 titled Safety Standard for Monorails and Underhung Cranes.



1. Rigid Runways

Unique rigid seismic designed runway connection provides a far superior track suspension system than a flexible type suspension, for accurately moving and positioning loads.



2. Enclosed Steel Track

Our unique track is high in strength and low in weight. The inner rolling surface stays clean, providing lower rolling resistance and reduces the wear on the wheels of the trolleys and end trucks.



WARNING

Overloading and improper use can result in injury. See above.

LODERAIL

Amick Associates, Inc.

Overhead Rail – Extruded Aluminum

version #2-04



Made in the U.S.A. 

Overhead Rail – Extruded Aluminum

General Description

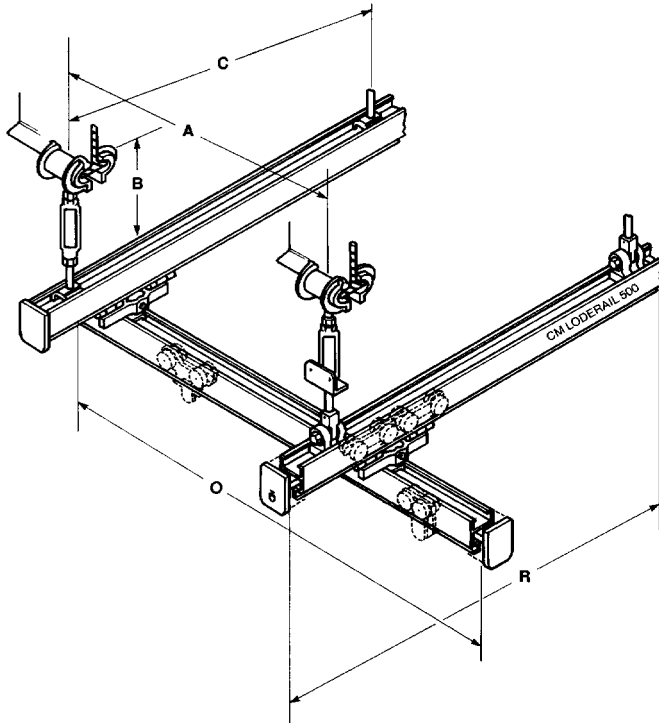
This overhead rail is ergonomically designed for:

- Ease of movement with minimum force needed to position loads.
- Corrosion resistant aluminum rail construction.
- Lightweight and easy to install.
- Pre-engineered attachments for simple installation.
- Reinforced nylon wheels for smooth, quiet operation.
- Monorail/bridge components easily adapted to application.
- Capacity: up to 1,000 lbs.
- Made in U.S.A.



*Warning – To avoid injury:

- Do not exceed working load limit, load rating, or capacity.
- Do not use to lift people or loads over people.
- Read and follow all instructions.



10

Specify

- A Length of span
- B Hanger type – fixed floating length
- C Hanger centers
- O Overall bridge length
- R Runway length



WARNING

Overloading and improper use can result in injury. See above.